



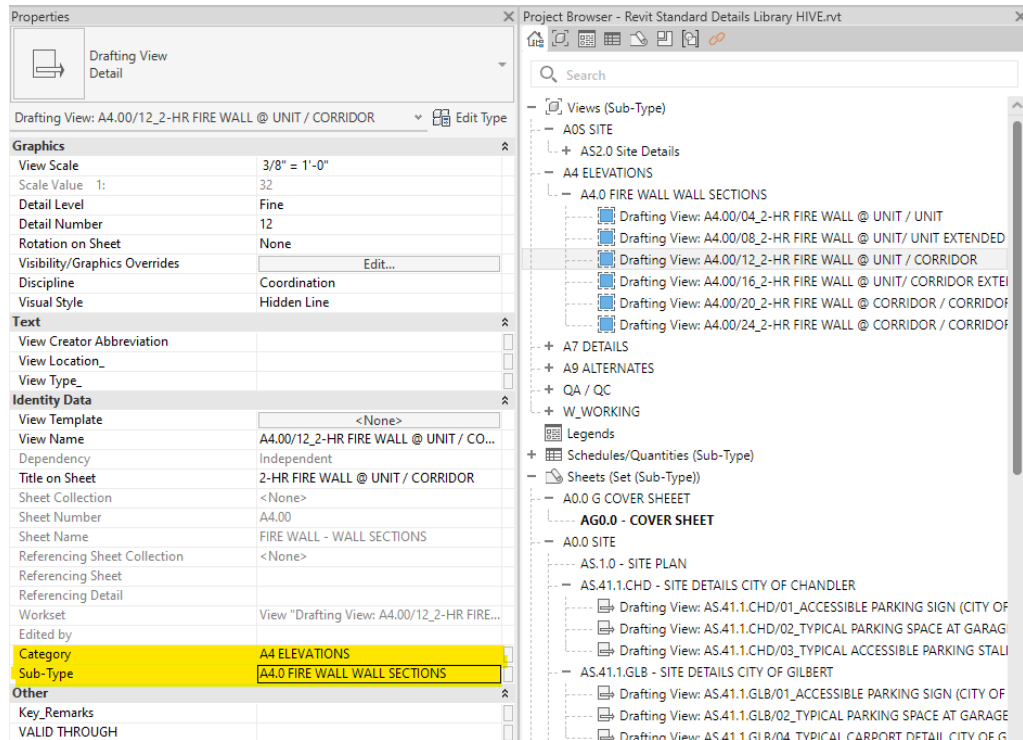
ORB REVIT BROWSER ORGANIZATION

ORB PROJECT BROWSER ORGANIZATION

VIEWS

Views will be divided by Category and Sub-Type

| Categories: | Sub-Type |
|-----------------------------------|--|
| A0.0 G COVER SHEET | |
| A0S SITE | AS1.0 Site Plans / AS2.0 Site Details / etc |
| A0 LIFE SAFETY | A0 Life Safety |
| A1 UNIT PLANS | A1 Unit Plans / A1 DD Unit Plans / 00 Unit Farm Working Views |
| A2 BUILDING PLANS | A2 Building |
| A3 REFLECTED CEILING PLANS | A3 RCP |
| A4 ELEVATIONS | A4 Bldg Elevations / A4 Bldg Sections / A4 Wall Sections |
| A5 ENLARGED PLANS | A5 Enlarged Plans / A5 Enlarged RCPs / A5 Storefront Elevations / A5 Enlarged Interior Elevations / etc |
| A7 DETAILS | A7100 / A7101 / A7111 / A7112A7920 |
| A8 SLAB PLANS | A8 Slab Plans |
| A9 ALTERNATES | 9110 / 9112 / 9113 PER PROJECT |





ORB REVIT BROWSER ORGANIZATION

SCHEDULES

Schedules will be sorted by the Sub-Type parameter only matching the Sheet categories already mentioned:

The screenshot displays two windows from the Revit software interface:

- Properties Window:** Shows the 'Schedule' properties for 'Door Schedule Units'. The 'Sub-Type' parameter is highlighted in yellow and set to 'A1 UNITS'. Other parameters include View Template (<None>), View Name (Door Schedule Units), Dependency (Independent), Workset (View "Schedule: Door Schedule Units"), Phasing (Phase Filter: Show All, Phase: New Construction), IFC Parameters (Export to IFC: By Type), and Other (Fields, Filter, Sorting/Grouping, Formatting, Appearance).
- Project Browser Window:** Shows a hierarchical tree structure. The 'A1 UNITS' category is expanded, showing a sub-category 'Door Schedule Units'. Other categories include A0 LIFE SAFETY, A6 SCHEDULES, and A9 CONTROLS.



ORB REVIT BROWSER ORGANIZATION

SHEETS

Sheets are sorted by Set (Sub-Type) parameter. Additional sheet collections can be done according to each project.

The screenshot displays two windows from the Revit software interface:

- Properties Window:** Shows the properties for a sheet named "Sheet". The sheet is titled "Sheet: FIRE WALL - WALL SECTIONS". Under the "Identity Data" section, the "Set (Sub-Type)" is highlighted in yellow and set to "A4 ELEVATIONS". Other properties include Scale (3/8" = 1'-0"), Sheet Number (A4.00), Sheet Name (FIRE WALL - WALL SECTIONS), and Sheet Issue Date (July 17, 2024).
- Project Browser Window:** Shows a hierarchical tree structure of the project. The "Sheets (Set (Sub-Type))" folder is expanded, showing a list of sheet collections: A0.0 G COVER SHEET, A0.0 SITE, A4 ELEVATIONS, A7 DETAILS, and A9 ALTERNATES. The "A4 ELEVATIONS" folder is further expanded to show a sub-collection: "A4.00 - FIRE WALL - WALL SECTIONS".